

Industrial load cells

- Precise compression / tension measuring
- High overload versions available
- Excellent price/performance ratio

Variohm provides professional technical support for your application and we can give you advice for the "best fit" load cell, mounting hardware and instrumentation.

Typical load cell properties

Output sensitivity mV/V:	3.0 ± 0.008
Safe overload:	150% of max capacity
Ultimate overload:	300% of max capacity
Zero balance of FS:	<± 1.0 %
Excitation recommended:	5..12V
Excitation maximum:	18V
Terminal resistance input:	350 ± 3,5 Ohm
Terminal resistance output:	350 ± 3,5 Ohm
Insulation impedance:	> 5000 Mohm (at 50VDC)
Temp. Range compensated:	-10..+40°C
Temp. Range operating:	-30..+65°C
Sealing (EN 60529):	IP65 to IP67, IP68 on M version



S-Type



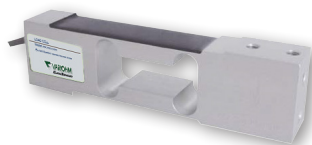
Product series	Load range	Material
AS3	25kg - 30t	Alloy steel
AS3G	50kg - 7.5t	Alloy steel
SS3G	50kg - 10t	Stainless steel

Shear beam



Product series	Load range	Material
SS8D	0,25t - 5t	Stainless steel
SSM8D	0,15t - 10t	Stainless steel
AS8C	0,1t - 10t	Alloy steel

Single point



Product series	Load range	Material
AL6B	0,3kg - 3kg	Aluminium
AL6D	2,5kg - 50kg	Aluminium
AL6N	3kg - 100kg	Aluminium
SS6N	7kg - 200kg	Stainless steel
SSM6A	6kg - 60kg	Stainless steel
SSM11	5kg - 500kg	Stainless steel

Compression



Product series	Load range	Material
SSM14G	10t - 50t	Stainless steel
SSM14A	10t - 200t	Stainless steel
SSM24R	60kg - 60t	Stainless steel

OEM force sensors

- Miniature Compression load cell
- Cost effective OEM Design
- Range up to 8.9 kN (2000lbf)

Our OEM compression load cells are based on the Micro-Fused Technology™, which has hardly any aging effect compared to a standard strain gaged load cell. The design is optimised for cost driven OEM applications.

FX1901

FC23



FX1901					
Range	Accuracy	Temp.error Zero	Temp.error Span	Output signal	Zero force output
0.04 ...0.4 kN (10 lbf... 100 lbf)	±1 % FS	±8 % FS	±2,5% FS	20mV/V	± 15mV
Operating temperature	Long Term Stability	Sealing	Overload	Supply Voltage	Resistance
-0° to +50°C	±1 % FS / year	No rating	250% FS	2-10 VDC	Input 3 kΩ Ouput 2.2 kΩ

FC23					
Range	Accuracy	Temp.error Zero	Temp.error Span	Output signal	Zero force output
0.22...8.9 kN (50 lbf... 2000 lbf)	±1 % FS	±1 % FS	±1% FS	20mV/V 0,5..4.5V	± 20mV
Operating temperature	Long Term Stability	Sealing	Overload	Supply Voltage	Resistance
-40° to +85°C compensated 0° bis +50°C	±1 % FS / year	No rating	250% FS	2-10 VDC 5VDC	Input 3 kΩ Ouput 2.2 kΩ

Force sensors for test and measurement

- Precise force measurement
- Rugged stainless steel design
- Internally sealed strain gauges

Variohm's range of force sensors for test and measurement includes single and double ended beams, compression, damped load cells, load cell indicators, clevis pin, and load bolts.

Clevis pin

Load bolt

Load cell



Clevis Pin			
Range	Version	Output Signal	Non-Linearity
From 0-6,5 kN To 0-3550 kN	<ul style="list-style-type: none"> • Standard • Wire rope • Shackle design • Hydraulic cylinder • Sheave 	• 2 mV/V	• ± 0,50 % FS

Load bolt			
Range	Version	Output Signal	Non-Linearity
From 0-4 kN to 0-640 kN	<ul style="list-style-type: none"> • Stainless steel Hex-Head • Aluminium Hex-Head • Studs 	<ul style="list-style-type: none"> • Full bridge • Quarter bridge 	• ± 0,50 % FS

Load cell			
Range	Version	Output Signal	Non-Linearity
From 0-1.1 kN To 0-11120 kN	<ul style="list-style-type: none"> • Universal • Compression • Fatigue rated 	<ul style="list-style-type: none"> • 2 mV/V • 3 mV/V 	<ul style="list-style-type: none"> • ± 0,25 % FS • ± 0,10 % FS

General properties			
Temp. range	Overload	Material	Output options
Typ. +65°C Optional +150°C	Typ. 150%	Typ. Stainless steel Others on request	<ul style="list-style-type: none"> • Double bridge • 4...20mA amplifier • Intrinsically safe