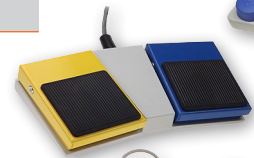


Multi-Pedal Footswitches

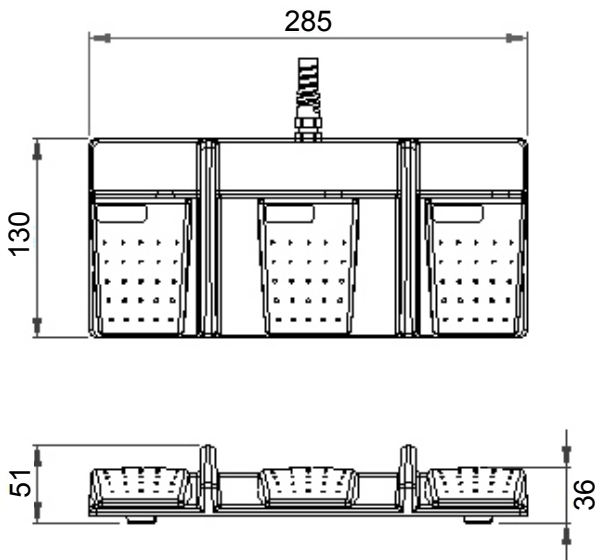


Technology Ltd

- Using all of the options available with our multi-pedal footswitching, we can meet a wide variety of OEM applications and comply to the differing international standards
- Sealed to IPX2 & IPX7 (IPX8 upon request)
- Maximum electrical ratings are determined by application
- 2, 3 & 4 pedal versions available



Reference dimensions - 3-pedal model



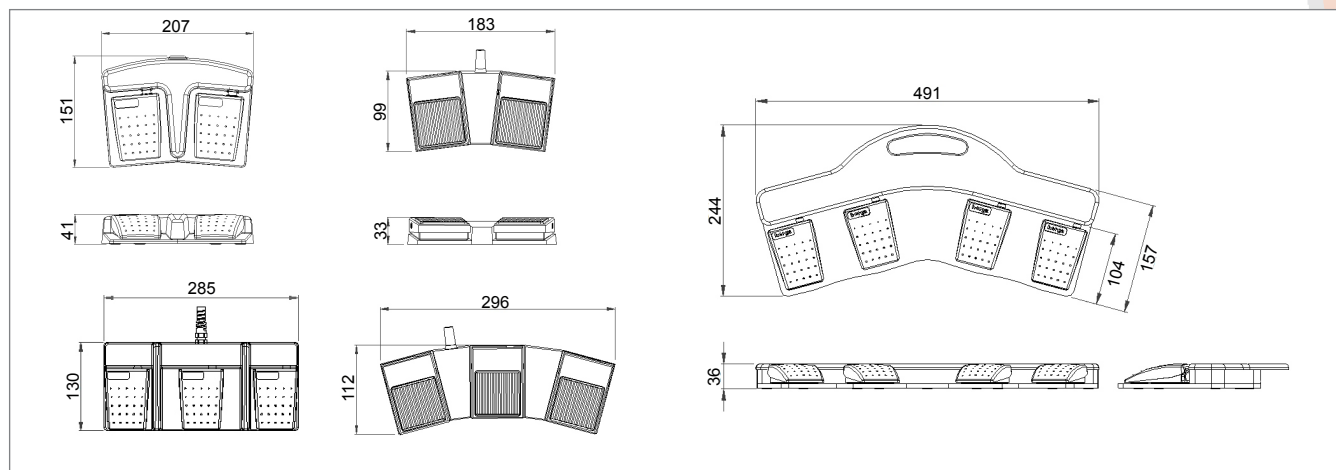
General specifications

Standards/ approvals	Not limited to but including: Footswitch: low voltage directive 2014/35/EU, EN 60950; Microswitch: EN 61058-2-1, EN 61058 (Dependent upon application chosen)
Degree of protection	EN 60529 IPX2, IPX7 or IPX8
Connection method	stripped cable cores or connector of your choice
Electrical rating	Determined by application

Contact configuration	SPST N/O, SPST N/C, SPCO momentary or latching
Operating temperature range	-5°C to +40°C
Body material	Thermoplastic, powder coated mild steel, stainless steel, aluminium
Weight	Varies, dependent on the base and footswitch type
Additional information	Custom bases available for OEM applications

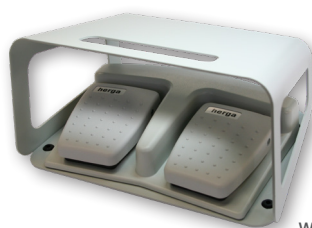


Reference dimensions - other multi-pedal model options



Accessories

Part Number	Description
6202-0001	Single Black RAL 9005 guard
6202-0002	Single Grey RAL 7035 guard
6202-0003	Twin Grey RAL 7035 guard



With 6202 Guard