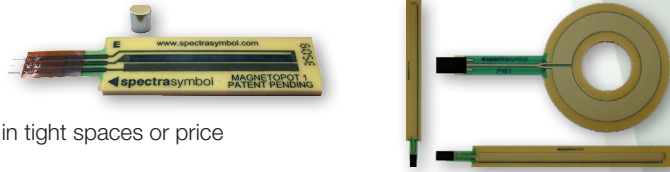


Membrane potentiometer

- Stroke up to 1000mm
- Exceptionally cost-effective
- Customised designs available

Membrane potentiometers are ideal for position measurement in tight spaces or price sensitive application with high volumes.

Membrane potentiometers



Product line	Range	Typ. Linearity	Hysteresis	Working temperature	Life cycles	Sealing	Features
SoftPot	0..12.5-1000 mm	3...1% FS	no hysteresis except by wiper	up to 50°C	up to 1 Mio	IP65 (active area)	cost effective
HotPot	0..12.5-1000 mm	3...1% FS	no hysteresis except by wiper	up to 85°C	up to 10 Mio	IP65 (active area)	high temperature
ThinPot	0..12.5-1000 mm	3...1% FS	no hysteresis except by wiper	up to 50°C	up to 1 Mio	IP65 (active area)	small
MagnetoPot	0..12.5-1000 mm	5...3% FS	hysteresis 3mm, depends on magnet	up to 85°C	up to 1 Mio	IP65 (active area)	contactless

Linear potentiometers

- High-Performance and industrial versions
- Small, robust and long live
- Shock- and vibration resistant

The robust Variohm linear potentiometer line has been developed for demanding applications whilst the Ixthus potentiometer line focusses typical industrial applications.

VLP

ELP



Product line	Range	Typ. Linearity	Repeatability	Working temperature	Life cycles	Sealing	Features
VLP	0..25-290 mm	± 0.2 ... 0.1% FS	< ± 0.01 mm	up to 175°C	> 25 Mio	up to IP67	very robust
ELPM	0..12.5-150 mm	± 0.5% FS	< ± 0.01 mm	up to 175°C	> 25 Mio	up to IP67	very small
PZ12	0..10-150 mm	±0.05% FS	± 0.01 mm	up to 100°C	up to 100 Mio	up to IP65	compact and cost effective
KTC	0..50-1250 mm	±0.05% FS	± 0.01 mm	up to 100°C	up to 100 Mio	up to IP65	cost effective

Cable extension transducers

- Wide product range for all applications
- Measurement range from 38mm up to 43m
- Multiple Options for all designs

Cable-extension transducers detect and measure linear position and velocity using a flexible cable and spring-loaded spool.

Cable extension transducers



Product line	Range	Typ. Accuracy	Repeatability	Working temperature	Output signal	Sealing	Features
Miniature/Test	0..38-1270 mm	± 1.00 ... 0.15% FS	± 0.05...0.025% FS	up to 125°C	analog, encoder	up to IP67	small design
Automation	0..50-6350 mm	± 0.28 ... 0.04% FS	± 0.05 ... 0.02% FS	up to 85°C	analog, encoder, Bus	up to IP67	multiple options
Industrial	0..50-43500 mm	± 0.25 ... 0.02% FS	± 0.05 ... 0.02% FS	up to 85°C	analog, encoder, Bus	up to IP68	extremely robust
OEM	0..50-3750 mm	± 0.25 ... 0.04% FS	± 0.15 ... 0.075% FS	up to 85°C	analog, encoder, Bus	none	cost effective

Laser-Position sensor

- Measurement range up to 1000mm
- High sampling rate up to 9.4 kHz
- Robust design up to IP67

RF603



Product	Range	Typ. Resolution	Typ. Linearity	Working temperature	Output signal	Sealing	Sampling rate
RF603	0...2-1000 mm	0.01% of the range	+/-0.1% of the range	up to -30..120°C	analog, digital, Bus	IP67	9.4 kHz

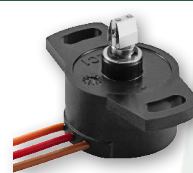
Rotary angle sensors

- Measurement range up to 360°
- Redundant versions
- Robust design
- Potentiometric and contactless

EURO-X



SP2800



Product	Range	Typ. Linearity	Life cycles	Working temperature	Mechanical interface	Housing	Type
SP2836	0..100°-345°	± 1 ... 0.3% FS	50 Mio	up to 150°C	6mm D-Shaft round	Celstran IP66	potentiometric
SP2846	0..100°-345°	± 1 ... 0.3% FS	50 Mio	up to 150°C	6mm flat push on	Celstran IP66	potentiometric
SP2890	0..100°-345°	± 0.5 ... 0.3% FS	50 Mio	up to 150°C	6mm flat push on	Aluminium IP66	potentiometric
Euro-X2831	0..30°-360°	± 0.3% FS	more than 50 Mio	up to 125°C	6mm D-Shaft round	Celstran IP65	contactless
Euro-X2851	0..30°-360°	± 0.3% FS	more than 50 Mio	up to 150°C	6mm flat push on	Celstran IP67	contactless

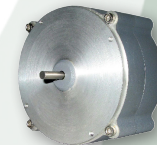
Industrial rotary sensors

- Measurement range up to 200 turns
- Absolute measurement
- Robust design up to IP68

RT8



RT9



Product	Range	Repeatability	Life cycles	Working temperature	Output signal	Sealing	Housing
RT8	0..45°-200 rotations	± 0.05% FS	250k..2.5 Mio	up to 85°C	Analog, encoder, Bus	up to IP68	Aluminium or St. Steel
RT9	0..90°-50 rotations	± 0.05% FS	250k..2.5 Mio	up to 85°C	Analog, encoder, Bus	up to IP68	Aluminium or St. Steel

EDGA absolute encoders

- Single-/Multiturn (14/40 bit)
- 36 mm / 58 mm housing
- Robust design to IP67
- EnDra technology: no gears, no battery

EDGA-58A-CANopen



EDGA-36



Product line	Multiturn range	Singleturn accuracy	Singleturn repeatability	Working temperature	Output signal	Sealing	Features
EDGA-58 series	up to 262,144 revolutions (18 bit) with high precision value up to 40 bit	< ± 0.35°	< ± 0.20°	- 40 °C up to + 80 °C	CANopen, CAN-SAE-J1939, SSI, RS485	up to IP67, shaft sealed to IP65	58 mm diameter, wide choice of mounting & shaft size
EDGA-36 series	up to 262,144 revolutions (18 bit) with high precision value up to 40 bit	< ± 0.35°	< ± 0.20°	- 40 °C up to + 80 °C	CANopen, CAN-SAE-J1939, SSI, RS485	up to IP67, shaft sealed to IP65	36 mm diameter, wide choice of mounting & shaft size